



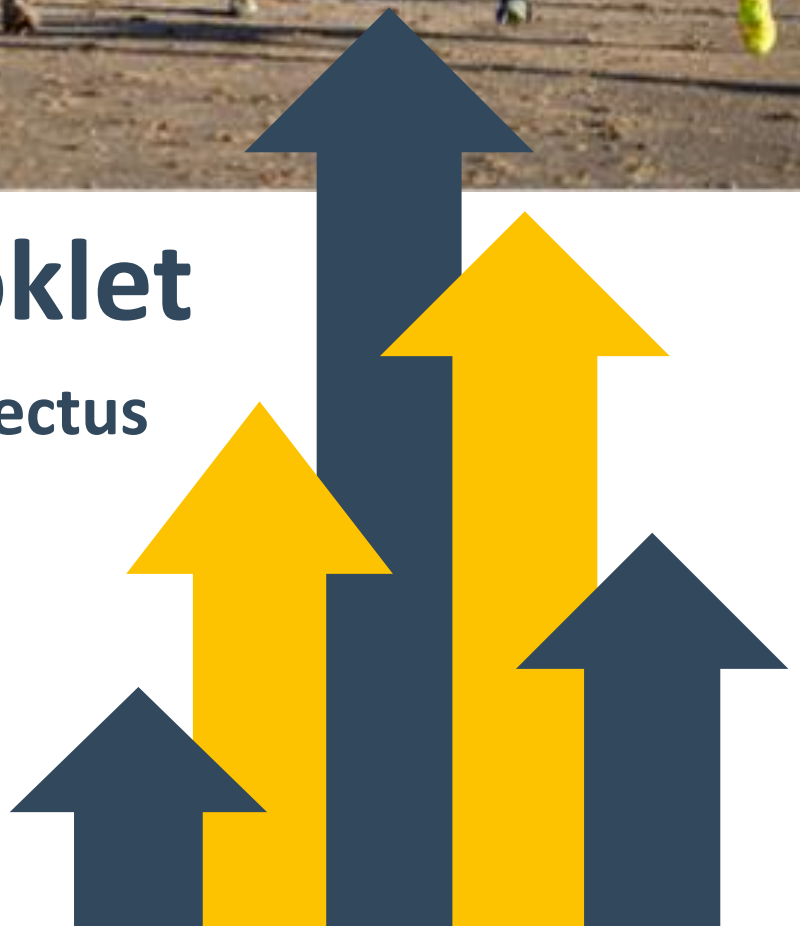
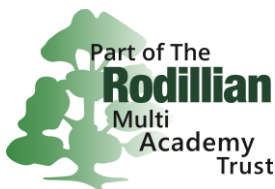
Brayton  
Academy



# Options booklet

Year 10 GCSE prospectus

2024 - 2025





# Letter to parents and carers

---

March 2024

Dear parent/carers

RE: Options Process: Yr9 into Yr10

As your child moves into KS4 it is important that we take the time to consider the start of their GCSE journey. To equip you with relevant subject specific information, we have produced a range of informative promotional materials. These materials can be viewed on our website and can be accessed at your leisure.

In recognition of our students being individuals, each with their own ambitions and personalities, Brayton Academy offer a range of GCSE options alongside our core GCSE curriculum. We acknowledge that the selection of an option subject needs to be carefully considered, as the option process gives our students the ability to tailor their GCSE package in preparation for further education or their chosen career path.

Students will study three option choices over Year 10 and Year 11. They will select either GCSE geography or GCSE history to study for a two-year option which they will complete in summer 2026. They will then choose one further option to take at the end of Year 10. Each one year option will receive 6 lessons a week over the course of the year. The list of subjects they can choose from is shown overleaf.

The information published on our website aims to simplify the options and support our students in making this important decision. We will also be hosting an options evening on Thursday 11th of April for those families who may still have questions for subject leads, have not finalised their choices or would just like an opportunity to meet the options staff. It is important that each student, with support from their parents/carers, understands their own strengths and weaknesses so that they can optimise their chances of success. We recommend that students select courses that they enjoy and that they may wish to study when they continue their education at either a college or sixth form.

If you have any queries or need further information, please do not hesitate to contact me on 01757 707731 or email: [info@braytonacademy.org.uk](mailto:info@braytonacademy.org.uk).

Mr Parish

Vice Principal





## Timeline of events

---

**w/c 11/03/24:** Students will receive an introductory assembly on the options process

**21/03/24:** Letter to parents to outline the options process and direct you to the options materials published on our website

**21/03/24:** Students and families begin to research and make initial decisions around their preferred option choices. Students are encouraged to use the promotional material and speak with staff to seek clarity on their preferred courses.

**11/04/24:** Opportunity to attend our options evening event. Attendance to the evening is not compulsory, if students and families are happy with their choice you will have no need to attend the options evening. Those families who are undecided or require further information are welcome to visit the school.





# Curriculum structure

---

## Core curriculum

Students will study towards GCSEs in the following subjects:

- GCSE English Language
- GCSE English Literature
- GCSE Maths
- GCSE French

Additionally either:

- GCSE Trilogy Science (2 GCSEs)

**Or**

- GCSE Biology
- GCSE Chemistry
- GCSE Physics

## Guided options

Students will study one of the following:

- GCSE Geography

**Or**

- GCSE History

## Optional subjects

Year 10 open options:

- GCSE Art and Design
- GCSE Business Studies
- GCSE Computer Science
- GCSE Design and Technology: Materials
- GCSE Food Preparation and Nutrition
- GCSE Physical Education
- GCSE Drama
- GCSE Music
- GCSE Religious Studies

**In Year 11, students will select another option for 2024-25. All of the above options will be offered again. Please note some subject may not run, this will depend on student numbers for each option choice. Students will be asked to pick a reserve choice in the eventuality that their chosen option cannot be delivered.**



## Core curriculum: English Language



All students in Year 10 and 11 study AQA GCSE English Language alongside GCSE English Literature. An overview of the units of assessment for English Language is below. This course is 100% examination and is assessed at the end of the two-year course.

Paper 1 is an exploration in creative reading and writing. Paper 2 is an examination of the writers' viewpoints and perspectives. The spoken language element is non-examined and includes presenting, responding to questions and feedback, and use of standard English.

### What will be studied?

We give students a range of challenging and interesting fiction and non-fiction to read in Year 10 and aim to interleave language reading material with the themes presented in their literature studies where possible. We focus on reading and deconstructing high quality model texts with the aim of students being able to replicate these models in their own writing.

Themes and topics studied in Year 10 include food, Gothic fiction, dystopian fiction and war.

### Progression beyond GCSE

GCSE English Language is a requirement for many jobs and Post-16 courses. Post-16 qualifications in English carry a lot of respect and will be valuable for many careers or applications for Higher Education. A Level English Language is fascinating and covers study of how language develops, language in society and how children acquire language. It is a useful combination with subjects like sociology or psychology. It can lead to studies in education, care, social work and journalism.

### Course structure and assessment

#### English Language (AQA 8700)

#### Examination (100%)

Paper 1:

- Explorations in Creative Reading and Writing
- 50% of GCSE
- 1 hour 45 minutes

Paper 2:

- Writers' Viewpoints and Perspectives
- 50% of GCSE
- 1 hour 45 minutes

#### Non-exam assessment (NEA) (0%)

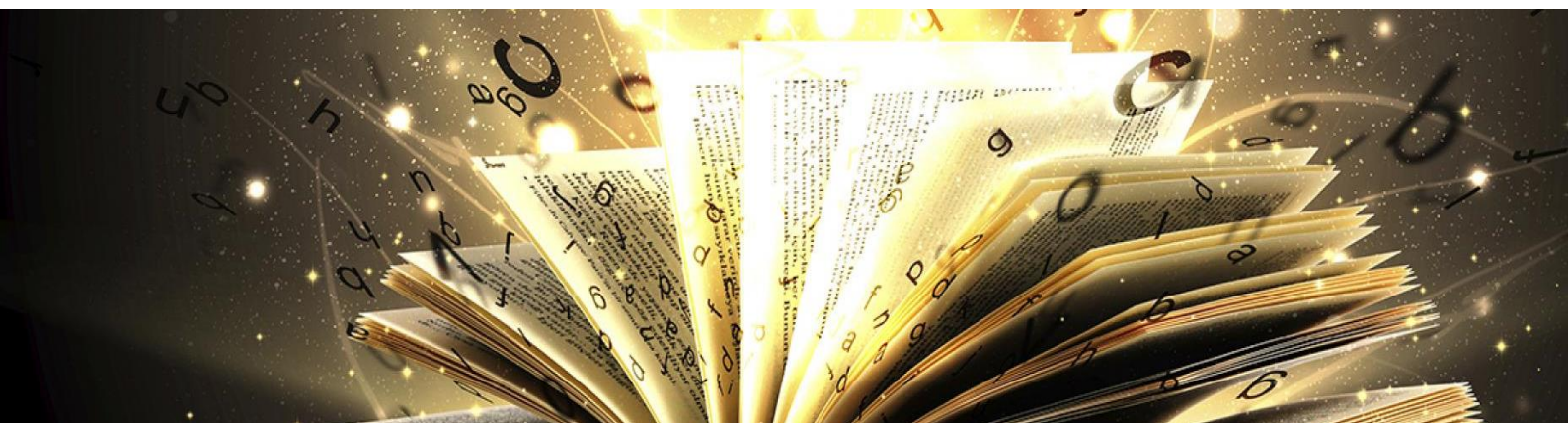
Component 3:

- Spoken language
- 0% of GCSE
- No time limit





# Core curriculum: English Literature



The aim of the GCSE English Literature course in Year 10 and 11 is to continue to inspire, challenge and motivate every student to read high quality, rigorous texts, no matter what their level of ability. All students in Year 10 and 11 study GCSE English Literature alongside GCSE English Language.

An overview of the units of assessment for AQA GCSE English Literature is detailed below. This course is 100% examination and is assessed at the end of the two-year course. All literature examinations are closed book.

## What will be studied?

Students at Brayton Academy study four core texts for GCSE English Literature. These are *An Inspector Calls*, *A Christmas Carol*, *Romeo and Juliet* and the *Power and Conflict* poetry anthology. Each core text is studied over a term in Year 10, with the poetry interspersed in each unit.

Whilst students are examined on their essay writing skills at the end of the GCSE, assessments in Year 10 often focus on short answer plot and quotation recall in the first instance before moving on to longer essay answers.

## Progression beyond GCSE

GCSE English Literature is a well-respected GCSE when applying for many jobs and Post-16 courses. Post-16 qualifications in English carry a lot of respect and will be valuable for many careers or applications for Higher Education. A Level English Literature allows students to study texts and genres in greater depth. There are a range of different specifications available in local colleges but all also students to study a literary passion in detail. A Level English Literature pairs well with studies in drama and history.

## Course structure and assessment

### English Literature (AQA 8702)

#### Examination (100%)

##### Paper 1:

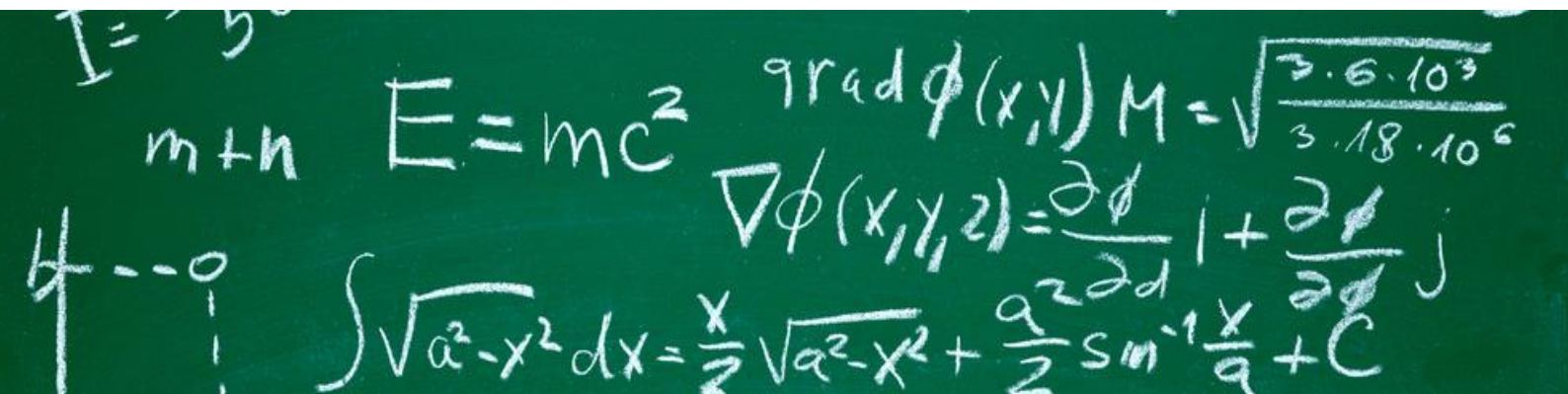
- Shakespeare and the 19th Century Novel
- 40% of GCSE
- 1 hour 45 minutes

##### Paper 2:

- Modern Texts and Poetry
- 60% of GCSE
- 2 hours 15 minutes



# Core curriculum: Mathematics



In Year 10 and 11, students build on the Mathematics they have studied in their education so far including work on number, algebra, ratio, proportion, geometry, probability and statistics.

All the examinations are taken at the end of Year 11. Students will take either the Higher or the Foundation tier.

## What will be studied?

**Number:** Arithmetic, fractions, decimals, percentages, use of calculator, properties of numbers and indices.

**Algebra:** Algebraic notation, graphs, equations, inequalities, formulae and sequences.

**Ratio, Proportion and Rates of Change:** Applying percentages, using ratio and proportion, work with compound measures.

**Geometry and Measures:** Properties of shapes, angles, symmetry, circles, area, volume, trigonometry, constructions and transformations.

**Statistics:** Collecting, representing, analysing and interpreting data.

**Probability:** Theoretical probability, relative frequency and experiments.

## Progression beyond GCSE

GCSE Mathematics is a requirement for many jobs and Post-16 courses. Further qualifications in Mathematics open many doors. Post-16 qualifications in Mathematics carry a lot of respect and will be valuable for many careers. You can study Mathematics or further Mathematics at A Level.

## Course structure and assessment

### Mathematics (Edexcel 1MA1)

#### Examination (100%)

Paper 1:

- Non-calculator exam
- 33.3% of total marks
- 90 minutes

Paper 2:

- Calculator exam
- 33.3% of total marks
- 90 minutes

Paper 3:

- Calculator exam
- 33.3% of total marks
- 90 minutes



## Core curriculum: Science



GCSE Sciences enable students to access Science at any level, whether they intend to study Science further or not.

Most students will gain two GCSEs in Science. Some students will be accelerated through the Combined Science course in Year 10. These students will then be taught the extra content in Year 11 to make up the three separate GCSEs in Biology, Chemistry and Physics.

### What will be studied?

**Biology:** students will study topics such as how the environment affects plants and animals.

**Chemistry:** students will study topics such as how atoms interact and how these interactions affect reactions.

**Physics:** students will study topics such as how forces affect matter and the energy changes that occur during interactions.

### Progression beyond GCSE

GCSE Sciences are a requirement for many jobs, and desirable for many Post-16 courses. Further qualifications in Science open many doors.

Post-16 qualifications in Sciences carry a lot of respect and will be valuable for many careers. Students can study Biology, Chemistry and Physics at A Level, as well as applied science.

### Course structure and assessment

#### Combined Science Trilogy (AQA 8464)

##### Examination (100%)

Components:

- Biology 1, Biology 2, Chemistry 1, Chemistry 2, Physics 1, Physics 2
- Papers 1 – 6 (16.7% each of 2 GCSEs)
- 1 hour 15 minutes each

OR

#### Biology (AQA 8461), Chemistry (AQA 8462) and Physics (AQA 8463)

##### Examination (100%)

Components:

- Biology 1, Biology 2, Chemistry 1, Chemistry 2, Physics 1, Physics 2
- Papers 1 – 6 (50% each of 3 GCSEs)
- 1 hour 45 minutes each





# Core curriculum: French



Students currently studying French in Year 9 will continue to study French in Year 10 as a two-year course.

The course encourages students to: develop their understanding of French in a variety of contexts, develop their language learning skills, develop the ability to communicate effectively in French and develop awareness and understanding of countries and communities where French is spoken.

## What will be studied?

Theme 1: People and lifestyle. This covers the following topics, Identity and relationships with others, Healthy living and lifestyle and Education and work.

Theme 2: Popular culture. This covers the following topics, Free-time activities, Customs, festivals and celebrations and Celebrity culture

Theme 3: Communication and the world around us. This covers the following topics, Travel and tourism, including places of interest, Media and technology and The environment and where people live.

## Progression beyond GCSE

By studying a language, students can enhance their future employment possibilities. They will have an in-depth insight into another culture and society which

will help them, not only with their communication skills, but also their interpersonal skills. The course provides students with a sound basis for further study at AS and A2 Level and also at university by developing their written communication and their independent learning skills.

## Course structure and assessment

### French (AQA 8658)

#### Examination (75%)

Paper 1 :

- Listening Examination
- 25% of GCSE
- 35 or 45 minutes

Paper 3 :

- Reading Examination
- 25% of GCSE
- 45 minutes or 1 hour

Paper 4:

- Writing Examination
- 25% of GCSE
- 1 hour or 1 hour 15 minutes

#### Non-exam assessment (NEA) (25%)

Paper 2:

- Speaking Assessment
- 25% of GCSE
- 7-9 or 10-12 minutes



# Core curriculum (guided option): Geography



Geography will help students to be more aware of everyday situations and issues faced by the people who live around them and in other parts of the world.

Geography is a highly topical subject; ever changing as world events unfold. When students see newspaper articles or television reports about a potential cataclysmic 'super-volcanic' eruption in the USA, then Geography will help them make sense of what is going on by making balanced judgements.

They will study the AQA GCSE Geography specification.

## What will be studied?

Paper 1: The Challenge of Natural Hazards, The Living World and Physical Landscapes in the UK.

Paper 2: Urban Issues and Challenges, The Changing Economic World and The Challenge of Resource Management.

Paper 3: Issue Evaluation and Fieldwork - Students will undertake two geographical enquiries to show an understanding of both physical and human environments.

## Progression beyond GCSE

Geography is be useful for students considering a career in town and transport planning, weather and climate, teaching, emergency management, natural disasters, engineering, tourism, nature conservation, local government, geology and more.

## Course structure and assessment

### Geography (AQA 8035)

#### Examination (100%)

Paper 1:

- Living with the Physical Environment
- 35% of GCSE
- 1 hour 30 minutes

Paper 2:

- Challenges in the Human Environment
- 35% of GCSE
- 1 hour 30 minutes

Paper 3:

- Geographical Applications
- 30% of GCSE
- 1 hour 30 minutes



## Core curriculum (guided option): History

---



History is a popular option subject and will be of interest to any student who enjoys finding out about the past and how the past affects the world we live in today.

Throughout the course, students study a range of History and will develop their ability to investigate and analyse in a historical context. Key skills include, inference, source work, extended writing and debate.

### What will be studied?

#### Shaping the nation (Year 10)

- Norman England, c1066–c1100
- Britain: Health and the people: c1000 to the present day

#### Understanding the modern world (Year 11)

- Germany, 1890–1945: Democracy and dictatorship
- Conflict and tension: the inter-war years, 1918–1939

### Progression beyond GCSE

History is a traditional academic subject with an excellent reputation with institutions of Higher Education and employers alike. History students are highly sought after by the legal profession, armed forces, management sector and even the entertainment industry due to the analytical skills developed by the study of the subject.

### Course structure and assessment

---

#### History (AQA 8145)

#### Examination (100%)

##### Paper 1:

- Understanding the Modern World
- 50% of GCSE
- 2 hours

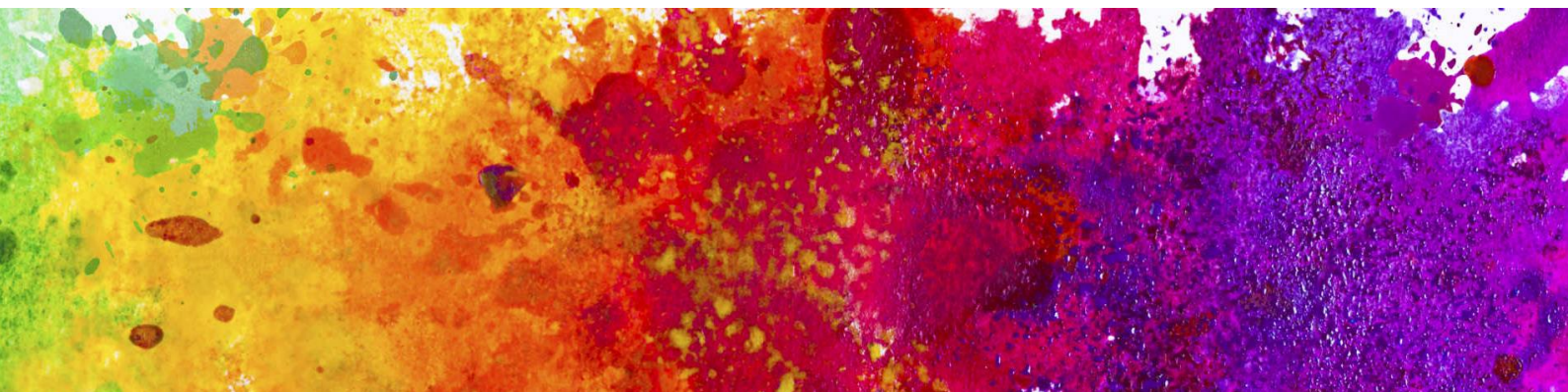
##### Paper 2:

- Shaping the Nation
- 50% of GCSE
- 2 hours





## Optional subject: Art and Design



Our one-year general Art and Design course gives students a foundation to access the increasing number of careers in the creative industries. Students are given the opportunity to study, research and experience a wide range of artistic approaches and the freedom to develop their ideas.

GCSE Art and Design promotes independence and encourages students to be creative and produce imaginative and exciting work.

### What will be studied?

The course gives students the opportunity to study, research and experience a wide range of approaches to Art and Design with a focus on:

- Drawing and painting: developing drawing skills, working in different materials and on different scales.
- Materials based study: developing new techniques and materials; e.g.: printing, batik, fabric painting, collage. Students will be encouraged to be experimental.
- Critical study: students learn how to analyse art work and are encouraged to express their ideas and opinions.

### Progression beyond GCSE

Students can progress from GCSE Art and Design to study a more advanced course, for example A-Level Art, Fine Art, Graphics, Textiles and Photography at college or sixth form. Alternatively, students could progress to art college and study a Level 3 BTEC course in order to access degree level qualification.

### Course structure and assessment

#### Art and Design: Fine Art 8202

#### Non-exam assessment (NEA) (100%)

Component 1:

- Portfolio
- 60% of GCSE
- No time limit

Component 2:

- Externally set assignment
- 40% of GCSE
- Preparation period followed by 10 hours of supervised time





## Optional subject: Business Studies



This is a one-year course focusing on both the theoretical and practical aspects of establishing and running a business.

GCSE Business Studies allows students to understand the external influences that dictate whether a business succeeds or fails, such as, political, economic, financial or environmental issues

Students are encouraged to look beyond the classroom, putting themselves in the shoes of an entrepreneur looking for the next big business opportunity.

### What will be studied?

Paper 1: Investigating Small Businesses. Topics such as enterprise and entrepreneurship, spotting a business opportunity, putting a business idea into practice, making the business effective and understanding external influences on business.

Paper 2: Building A Business. Topics such as growing the business, making marketing, operational, financial and human resource decisions.

### Progression beyond GCSE

GCSE Business could lead to work in a business-related profession such as accountancy, law, marketing or the leisure and tourism industry. GCSE Business will support many jobs and Post-16 course applications. Further qualifications in Business can open many doors and you can go on to study Business or Economics at A-Level.

### Course structure and assessment

#### Business (Edexcel 1BS0)

#### Examination (100%)

Paper 1:

- Investigating small business
- 50% of GCSE
- 1 hour 45 minutes

Paper 2 :

- Building a business
- 50% of GCSE
- 1 hour 45 minutes



## Optional subject: Computer Science



Computer Science is a linear course; this means that both exams will be taken at the end of the course once all the content has been taught.

Computer science is a technical course which requires skills such as logical and computational thinking to be developed as well as giving learners knowledge in how computer hardware processes data and instructions and how software uses the hardware. Learners will gain skills in problem solving while developing computer programs for a given scenario.

### What will be studied?

Students will:

- Develop skills in current and emerging computer hardware & software.
- Look at how the main hardware components of the computer work together to carry out tasks.
- Look at how different types of software are used to perform different tasks to help run and allow the user to interact with the computer.
- Understand how algorithms are used in the planning and creation of a computer program.
- Develop computer programming skills to develop a program to solve a real world problem.
- Test and evaluate computer programs to identify and fix errors within the code and operation.

### Progression beyond GCSE

A GCSE in Computer Science is designed to give students the opportunity to develop highly sought-after knowledge and skills, whether they're for the workplace or for everyday life. It gives students a stepping-stone onto Further and Higher Education courses such as Software Development, Games Programming, Website Development, System Analysis, Network Management and more.

### Course structure and assessment

#### GCSE Computer Science (OCR J277)

Examination (100%)

##### Paper 1

- Computer Systems
- 50% of GCSE
- 1 hour 30 minutes

##### Paper 2

- Computational thinking, algorithms and programming
- 50% of GCSE
- 1 hour 30 minutes



# Optional subject: Design and Technology: Materials



This course will prepare students to participate confidently and successfully in an increasingly technological world. They will gain awareness of, and learn from, wider influences on Design and Technology including historical, social, cultural, environmental, economic and technological factors.

There is opportunity to work creatively when designing and making, and apply technical and practical expertise.

## What will be studied?

The examination focuses on three main areas: core technical principles, specialist technical principles and designing and making principles. Much of this will be learnt in theory lessons.

Coursework will take between 30-35 hours (approximately). Students will undertake an engineering 'design and make' task; focussing on a number of areas including generating, developing and realising a design idea. Students will produce a prototype and a portfolio of evidence.

## Progression beyond GCSE

Opportunities to embark on a diverse array of careers include engineering, architecture, biomedical, video gaming platforms, furniture design, interior design and apprenticeships within the construction industry. This course will support you in Post-16 study of any design, engineering, or architecture course.

## Course structure and assessment

### Design and Technology (AQA 8552)

#### Examination (50%)

Paper 1:

- Core and specialist technical principles, designing and making principles
- 50% of GCSE
- 2 hours

#### Non-exam assessment (NEA) (50%)

Component 2:

- Core and specialist technical principles, designing and making principles
- 50% of GCSE
- 30-35 hours approximately

Please note that students are unable to study both materials and textiles.





## Optional subject: Drama



GCSE Drama is an exciting opportunity for students to express themselves as performers. They will work individually and as part of small groups to create their own drama pieces and to interpret scripts written by a range of playwrights. They will also learn about theatrical techniques and styles.

Students will study texts and watch live theatre performances by professional actors. It is a requirement of the course that they visit the theatre as they must write about a live performance they have seen in the exam.

### What will be studied?

- **Understanding drama:** the study of a play to answer essay-styled exam questions. Students will describe, analyse and evaluate the text using quotes to support their response developing their English Literature skills.
- **Devising drama:** responding to a stimulus (for example, a photograph, newspaper report or a piece of music) to create a performance. Students will learn skills such as physical theatre and explore a range of contemporary practitioners.
- **Texts in practice:** a performance of two extracts from the same play, showing that they can learn lines, perform confidently and interpret the playwright's meaning.

### Progression beyond GCSE

The course will allow you to go on to study Drama, Theatre Studies, English Literature and Performing Arts at A Level at further education colleges. GCSE Drama provides skills necessary for careers in or outside of the theatre such as teaching and broadcasting/film/video. GCSE Drama builds on skills such as communication, teamwork, self-esteem, motivation, leadership, negotiation, initiative, creativity, empathy, critical thinking and public speaking, which are all transferable life skills.

### Course structure and assessment

#### Drama (AQA)

#### Examination (40%) - written paper

##### Component 1:

- Understanding Drama
- Study of a set text: Blood Brothers and the review of a live theatre performance
- 40% of GCSE

#### Non-exam assessment (NEA 40%) - practical

##### Component 2:

- Devising Drama
- Logbook
- 40% of GCSE

#### Examination (20%) - Practical

##### Component 3:

- Texts in Practice
- Perform two extracts from one play
- Externally examined
- 20% of GCSE





## Optional subject: Music

---



Brayton students who opt for Music GCSE will study the AQA Specification. The course is designed to assess all aspects of music making – performance, composition and musical analysis. All students will receive weekly instrumental lessons to support their musical progression.

### What will be studied?

**Understanding music:** Students will learn the intricate details about how a variety of musical genres are composed:

- Western classical tradition 1650-1910
- Popular music
- Traditional music
- Western classical tradition since 1910

**Performance:** Students will become experts on their chosen instruments and will learn how to perform confidently.

**Composition:** Students will use music technology programmes to complete two compositions. One composition will be based on a brief and the second will be a free composition.

### Progression beyond GCSE

The course would be useful if you were considering a career in music, music technology, performing arts, recording or studio work. This course will support you studying Music, Dance, Theatre Studies and Performing Arts Post-16.

### Course structure and assessment

---

#### Music GCSE

##### Examination

Musical Understanding (40%)

- 1 hour 30 minutes

##### Non-exam assessment (NEA)

Performing Music (30%)

- 1 x solo performance
- 1 x ensemble performance

Composing music (30%)

- 1 x free composition
- 1 x composition to a brief



# Optional subject: Food Preparation and Nutrition



This course will equip students with the knowledge, understanding, skills and the encouragement that they need to cook. It will give them the ability to apply the principles of food science, nutrition and healthy eating.

Students will be able to make informed decisions about a wide range of further learning opportunities and career pathways, and develop vital life skills so that they can feed themselves and others affordably and nutritiously.

## What will be studied?

The areas covered are food preparation skills, food, nutrition and health, food science, food safety, food choice, food provenance, and food preparation and cooking techniques.

Students will complete investigations into the working characteristics, functional and chemical properties of ingredients. Their coursework will also involve preparation, cooking and presenting a final menu of three dishes within a single period of no more than three hours, as well as planning in advance how this will be achieved.

## Progression beyond GCSE

Food preparation and nutrition is valuable in any career that involves food, food retail and the hospitality industry. In addition, it will be relevant to careers in social care. For example, caring for people with special dietary requirements. Further study may include health studies, catering and hospitality or leisure and tourism. It would support GNVQ, BTEC and NVQ Health and Social Care at Post-16.

## Course structure and assessment

### Food Preparation and Nutrition (AQA 8585)

#### Examination (50%)

Paper 1:

- Food preparation and nutrition
- 50% of GCSE
- 1 hour 45 minutes

#### Non-exam assessment (NEA) (50%)

Task 1:

- Food Investigation
- 15% of GCSE
- 10 hours

Task 2:

- Food Preparation
- 35% of GCSE
- 20 hours



# Optional subject: Physical Education



Our GCSE in Physical Education equips students with the knowledge, understanding and skills to develop their own performance in sport. They develop their understanding of socio-cultural influences on participation in sport, and the benefits of physical activity to health, fitness and well-being.

To be successful, students will need to be competent at a wide range of sports. This will include entering the course with at least three sports that could be used for the practical assessment.

## What will be studied?

Topic areas of study include:

- Bones and muscles
- Feedback, motivation and goal setting
- Media and sponsorship
- Participation
- Effects of Exercise
- Nutrition
- Injuries and hazards
- Healthy lifestyles

## Progression beyond GCSE

This qualification would allow you to progress to study the AS Level in Physical Education or the BTEC National Award in Sport.

Many students will then go on to University to study Physical Education, Sports Science or pursue a career in the sport industry such as a PE teacher, sports coach, sports scientist, physiotherapist, sports psychologist or fitness instructor.

## Course structure and assessment

### Physical Education (OCR J587)

#### Examination (60%)

Component 1:

- Physical factors affecting performance
- 30% of GCSE
- 1 hour

Component 2:

- Socio-cultural issues and sports psychology
- 30% of GCSE
- 1 hour

#### Non-exam assessment (NEA) (40%)

Component 3:

- Performance in physical education - 30% of GCSE
- Analysing and Evaluating Performance – 10% of GCSE





## Optional subject: Religious Education



Students can choose to study a course in Religious Studies over a one-year period.

They will study the AQA full course in Religious Studies. This course encourages candidates to develop their understanding of different religions and the impact religious belief has on modern day issues in the world. Religious Studies ultimately allows students to develop both analytical, communication and argumentation skills

### What will be studied?

Topic areas include:

- **Component 1** – The nature of God, Creation, Afterlife, Pilgrimage and religious festivals. The focus of this unit is what these religions say and look like on their own terms.
- **Component 2** – A range of issues including: Arguments for and against the existence God, Abortion, Euthanasia, Death Penalty and more. The focus of this unit is on religious and secular views on a range of relevant issues.

### Progression beyond GCSE

If you are considering a career in the following professions, then a qualification in Religious Studies is highly valued: Media work, Law, Politics, Civil Service, Journalism, Education, Police, and Business. Colleges and Universities also look favourably on a qualification in Religious Studies as it shows you have a general understanding of human nature, know how to weigh up the pros and cons of various positions, and give educated responses to the opinions of others.

### Course structure and assessment

#### GCSE Religious Studies A (AQA 8062)

Examination (100%).

#### Component 1

- The study of religions: beliefs, teachings and practices
- This will focus on Christianity and Islam
- 50% of GCSE
- 1 hour 45 minutes

#### Component 2

- Thematic studies
- 50% of GCSE
- 1 hour 45 minutes





# Notes

---



Brayton Academy  
Doncaster Road,  
Brayton,  
Selby, North Yorkshire  
YO8 9QS

[www.braytonacademy.org.uk](http://www.braytonacademy.org.uk)  
[info@braytonacademy.org.uk](mailto:info@braytonacademy.org.uk)  
01757 707731

